



TECH SPECS

AUTOMATIC CNC MULTISPINDLE DRILLING LINE – VALIANT	453 V	603 V	1203 V	2003/6 V	2003/8 V
Profile size [min. mm]	63x10	80x10	80x10	80x10	200x75
Profile size [max. mm]	450x450	610x305	1220x610	2030x610	2030x810
Drilling heads [no.]	3	3	3	3	3
Drilling tools per head [no.]	6/14	6/14	6/14	6/14	6/14
Drilling diameter [max. mm]	40	40	40	40	40
Spindle power [kW]	31	31	31	31	31
Spindle max. RPM	5000	5000	5000	5000	5000
Auxiliary stroke [mm]	300	300	300	300	300
Machine weight [kg]	10000	11500	13000	14500	15000

DRILLING & BAND SAWING VALIANT	453 VB	603 VB	1003 VB	1103 VB	1203 VB	2003/6 VB	2003/8 VB
Profile size at 90° [min. mm]	60x60	80x10	80x10	80x10	80x10	200x10	200x10
Profile size at 90° [max. mm]	450x450	610x310	1015x450	1100x510	1250x610	2000x610	2000x610
Motor power [kW]	9	9	9	15	15	18	19
Max. band saw blade speed [mt/min]	150	150	170	170	170	170	170
Band saw blade size [mm]	41x1.3x6700	41x1.3x6700	41x1.3x7880	54x1.6x9920	67x1.6x10500	67x1.6x12100	67x1.6x12100
Machine weight [kg]	13700	15200	19000	24500	25600	31000	32000

DRILLING & COPING VALIANT	604 VFRC	1204 VFRC	2004/6 VFRC	2004/8 VFRC
Oxy-fuel torch [no.]	1	1	1	1
Plasma torch [no.]	1	1	1	1
Machine weight [kg]	18500	20000	21500	22000

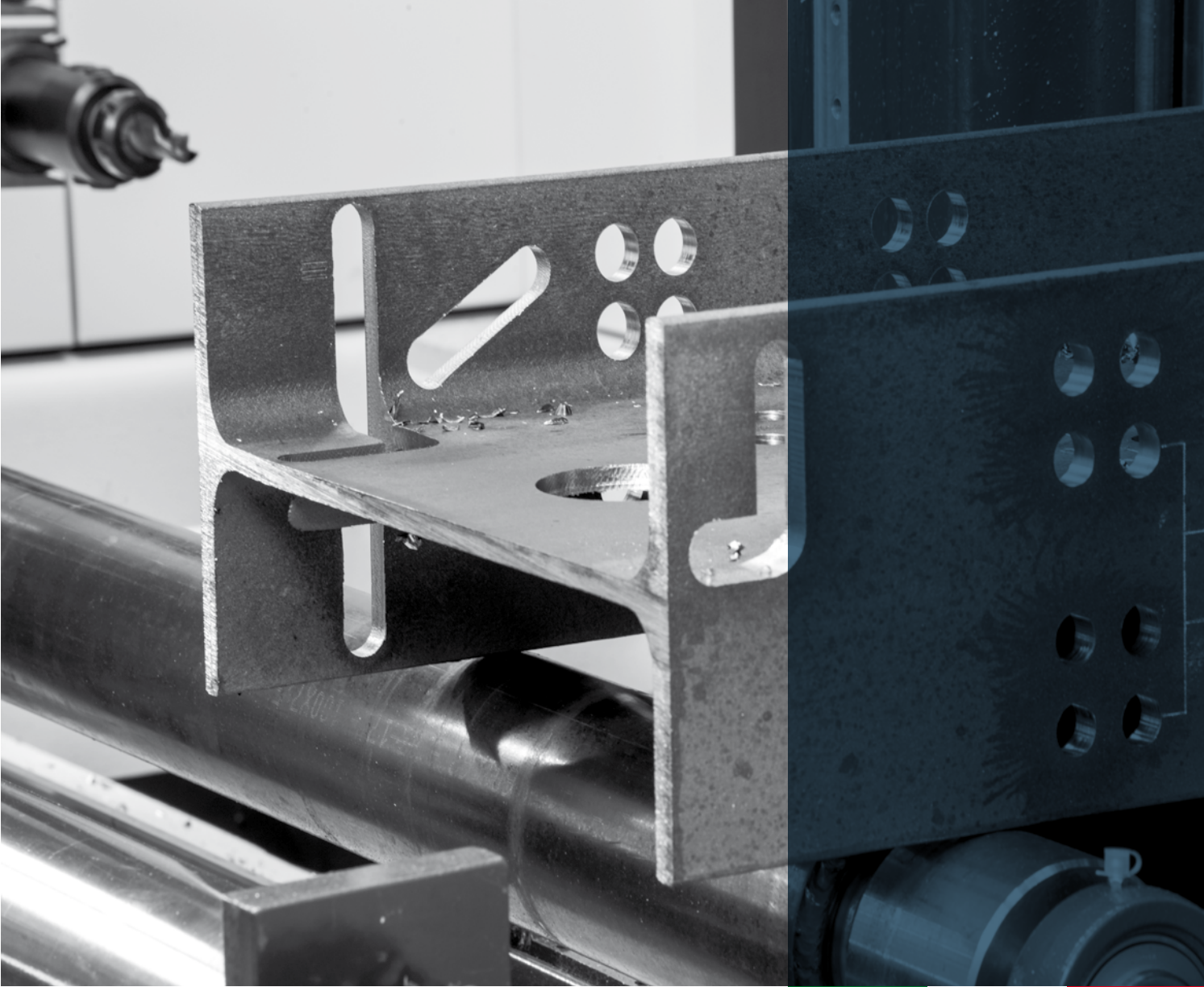
Please review FICEP's sales terms and conditions and machine tolerances as per specific documentation that can be supplied upon request. All the specifications on this catalogue are merely indicative and not binding for the manufacturer. The raw material mentioned on this catalogue are in accordance with the following standards: UNI EN 10025 for technical conditions; UNI ISO 5679 - UNI ISO 5680 - UNI 5397 - UNI 5398 - UNI EN 10024 - UNI EN 10034 - UNI EN 10279 - UNI EN 10056-1 - UNI EN 10056-2 for dimensional tolerances; UNI EN 1090 - UNI EN 9013 for pieces execution tolerances.



FICEP S.p.A. - HEADQUARTERS
via Matteotti, 21
21045 GAZZADA SCHIANNO VA
ITALY
Tel +39 0332 876111
Fax +39 0332 462459
email: ficep@ficep.it
www.ficepgroup.com

FICEP France
FICEP Iberica
FICEP UK
FICEP DE
FICEP Russia
FICEP Corporation
FICEP Mexico
FICEP Algeria
FICEP Sul America Service

FICEP Middle East - Dubai Office
FICEP Middle East
FICEP Hong Kong
FICEP Guangzhou
FICEP Austria Service
FICEP India Service
FICEP Korea Forge Service
FICEP Japan



VALIANT

Automatic CNC drilling,
drilling & band sawing,
drilling & coping lines
for profiles

VALIANT represents the latest evolution in our beam lines range.

The Valiant product line is a new three-spindle drilling system for the processing of the complete range of rolled structural steel shapes. These new models are the result of the constant commitment by our Engineering Team in addressing the requirements of the world's structural steel fabricators. In addition to the many industry leading innovative designs and features of the other structural steel drilling lines in our range, the Valiant incorporates several additional unique features and benefits such as:

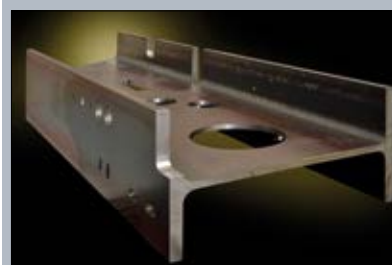
- New double vises and dual alignment systems to improve material clamping
- New Direct Drive spindles with reduced shape size, that deliver 100% of the motor's power to the tool for enhanced drilling performances
- New sub-axis spindle positioning that enables simultaneous drilling on all three surfaces even when the holes are not aligned. The underside scribing device, also with sub-axis positioning, permits up to four-side simultaneous scribing operations
- New carriage and material positioning system with enhanced features such as material sensing
- New tool-change system which accommodates up to 14 tools per spindle



Auxiliary axes with 300 mm stroke



14 positions tool-changer



Special milling operations



Pegaso is the new generation CNC for Ficep machines. PC, CNC and PLC are all integrated on a single board, to have the maximum reliability. Pegaso is based on field bus technology: CanBus and EtherCAT, with up to 32 axes controlled



Auxiliary axes with extended stroke

One of the most important innovations of the Valiant is the stroke of the sub axes. The additional auxiliary axis available on all three spindles has been extended up to 300 mm, allowing for a wider independent control of each spindle. With this innovation, where the beam remains stationary, we can maximize the utilization of each spindle within the stroke. For example, when drilling one surface it is possible to perform on the other surfaces independent drilling or milling-type operations such as helical milling, pocketing, weld prep, slotting, and more.

Drilling, sawing and coping with combined machines

The Valiant can easily be combined with the range of our band saws and coping robots to create an extremely productive integrated work cell, which is all managed by the same CNC control and software. This permits such typical task as straight or mitered cuts with a band saw or the plasma/oxy-fuel cutting of copes, mechanical openings, flange thinning, rat holes, weld prep, beam splitting and more.



Valiant drilling line combined with band saw



Valiant drilling line combined with coping robot