



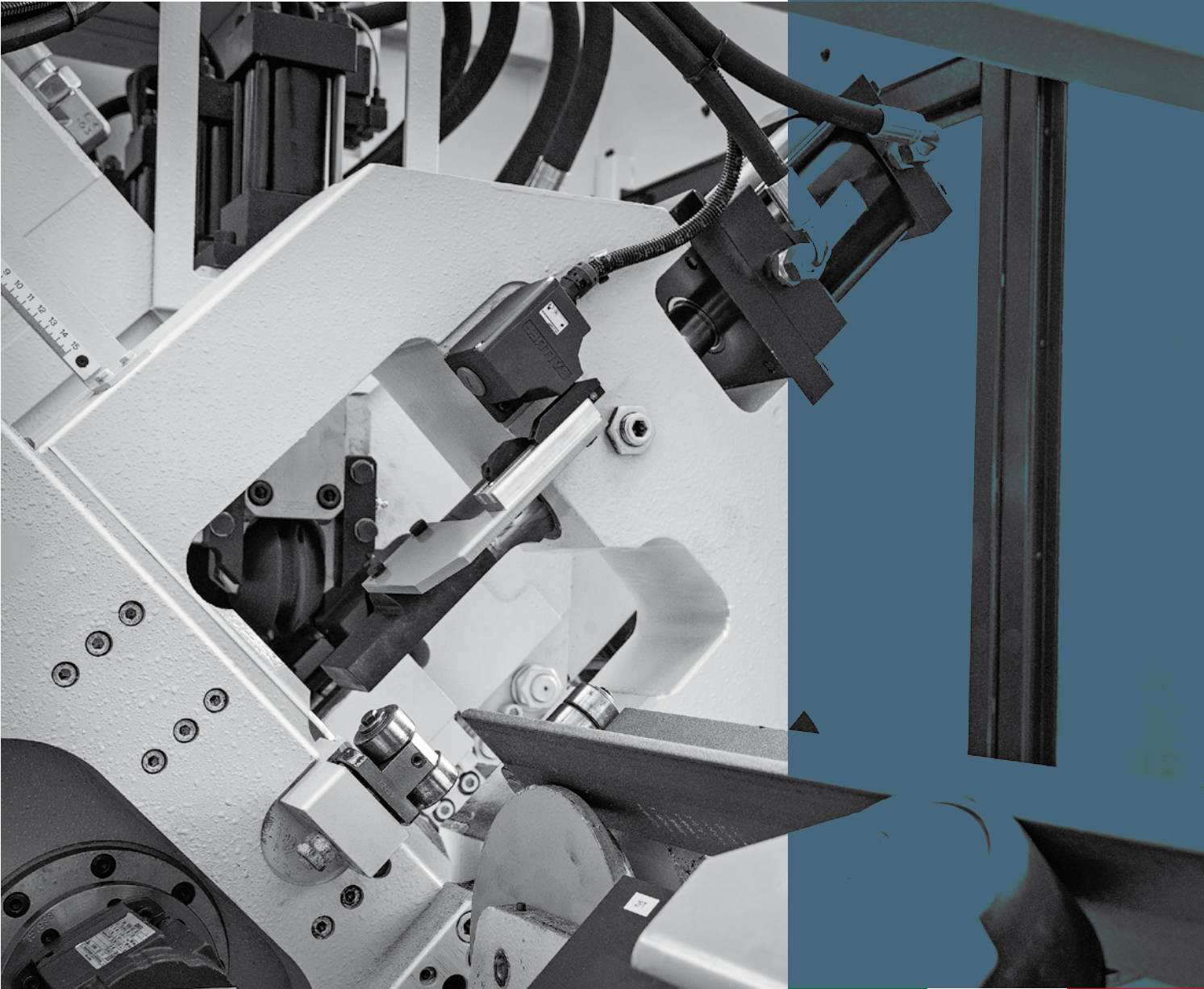
Pegaso control unit



Infeed cross transfer and rotating loading system

- The system layout is also flexible to incorporate:
- Automatic stock length loading tables
 - Rotary loaders for the automatic transfer of angles from the loading table to the system in feed conveyor
 - Infeed and outfeed rollerways of various lengths
 - Discharge tables for left or right unloading, based upon the requirement.

Optional drilling units for both flanges are also available



TECH SPECS

CNC PUNCHING AND SHEARING LINE FOR ANGLES - XP	XP10T2	XP10T4	XP12T4	XP12T6	XP16T4	XP16T6
Min. angle size (410 N/mm ²) [mm]	30x30x3	30x30x3	30x30x3	30x30x3	40x40x4	40x40x4
Max. angle size (410 N/mm ²) [mm]	100x100x10	100x100x10	120x120x13	120x120x13	160x160x19	160x160x19
Diameter per flange [no.]	1	2	2	3	2	3
Punching force [kN]	500	500	650	650	800	800
Max. punching diameter [mm]	32	32	32	32	32	32
Shearing force [kN]	1000	1000	1800	1800	2200	2200

Please review FICEP's sales terms and conditions and machine tolerances as per specific documentation that can be supplied upon request. All the specifications on this catalogue are merely indicative and not binding for the manufacturer. The raw material mentioned on this catalogue are in accordance with the following standards: UNI EN 10025 for technical conditions; UNI EN 10056-1 - UNI EN 10056-2 for dimensional tolerances; UNI EN 1090 for pieces execution tolerances.



FICEP S.p.A. - HEADQUARTERS
via Matteotti, 21
21045 GAZZADA SCHIANNO VA
ITALY
Tel +39 0332 876111
Fax +39 0332 462459
email: ficep@ficep.it
www.ficepgroup.com

FICEP France
FICEP Iberica
FICEP UK
FICEP DE
FICEP Russia
FICEP Corporation
FICEP Mexico
FICEP Algeria
FICEP Sul America Service

FICEP Middle East - Dubai Office
FICEP Middle East
FICEP Hong Kong
FICEP Guangzhou
FICEP Austria Service
FICEP India Service
FICEP Korea Forge Service
FICEP Japan

05-2017 Advanced Agency VA

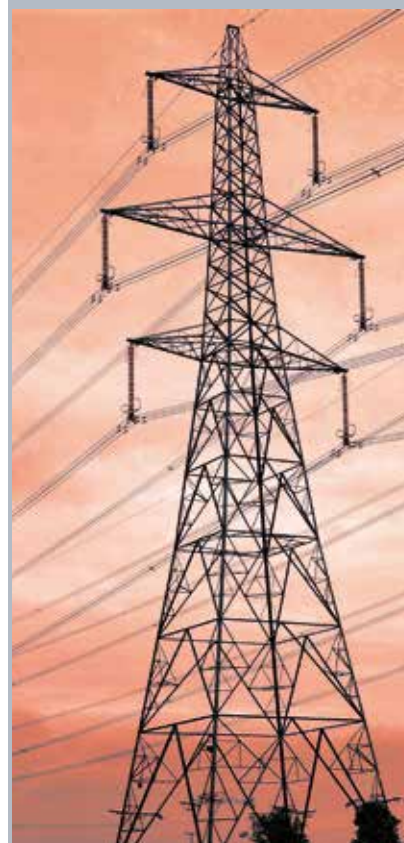


XP
High performance CNC
punching and shearing lines
for angles



Thanks to our unrivalled and long-standing experience our engineers have been able to study a brand new range of angles processing lines which represents a real breakthrough in the transmission towers field. XP range is our new challenge, our response to a always more demanding world, in which fabricators have to face very hard work schedules with high productivity and high accuracy requirements.

- **Faster carriage:**
improved, high speed and precise carriage with pincher group to feed bars at 120 mt/min.
- **Faster material clamping:**
unique automatic hold-downs system which constantly keeps contact with the material even during positioning. Each punching unit has two hold-downs, one before and one after, to better guarantee profile edges clamping.
- **Faster punching:**
super fast punching operations ensured by the new and forefront hydraulic power pack. Force and speed of the punching units are automatically managed by the CNC in function of the diameter and the material being processed.



Pegaso is the new generation CNC for Ficep machines. PC, CNC and PLC are all integrated on a single board, to have the maximum reliability. Pegaso is based on field bus technology: CanBus and EtherCAT, with up to 32 axes controlled



Daisy-wheel marking unit



On-board manifolds



Quick change punch holders



Single cut shearing unit

*The fastest
angle processing line ever!*

